

Bijou

KEILHAUER



B1413 - Crème



B1414 - Café au lait



B1415 - Ciment



B1416 - Gris



B1417 - Citron



B1419 - Rouge



B1420 - Cassis



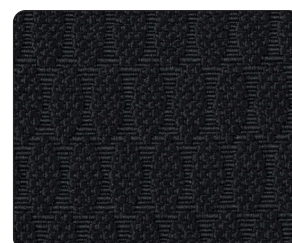
B1412 - Moss



B1421 - Herbe



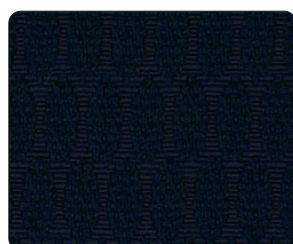
B1422 - Cocoa



B1402 - Chia



B1424 - Azur



B1425 - Royale



B1401 - Liquorice





** Limited stock available. Please contact Customer Service to confirm inventory.

Specifications

Bijou

Content	61.95% Post-Consumer Polyester, 32.45% Post-Industrial Polyester, 5.6% Virgin Polyester
Finish	Greenshield
Repeat	2" V, 0.27" H
Weight/Linear Yard	15.55 oz
Width	54"

Performance characteristics

Abrasion Resistance (ASTM D4157-02) Wyzenbeek Method	100,000 Double Rubs Heavy Duty	
Colorfastness to Light (AATCC- 16)	Class 5	
Colorfastness to Crocking (AATCC- 8)	dry - Class 5 wet - Class 5	
Breaking Strength (ASTM D5034)	Warp: 291 lbs. min. Fill: 392 lbs. min.	
Seam Slippage (ASTM D4034)	Warp: 110 lbs. min. Fill: 88 lbs. min.	
Brush Pill (ASTM D3511)	Class 5	

Flammability

CAL TB 117 2013	Passes	
-----------------	--------	---

Recommended cleaning instructions

WS	Water and soap
----	----------------

Dye lots may vary slightly from samples shown.



Visit Material Bank
to Order Samples