

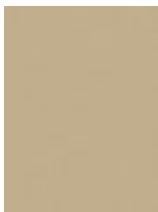
KEILHAUER

California Collection PVC-Free



Pear

922



Desert

931



Solstice

982



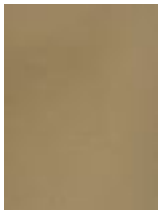
White

970



Silver Lake

953



Smokewood

937



Corduroy

907



Ballet

991



Misty Gray

939



Crabapple

923



Camel

941



Dragonfruit

993



Mushroom

946



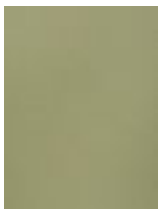
Flagstone

940



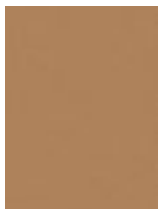
River Rock

973



Sherwood

948



Toasted Almond

929



Beet

934



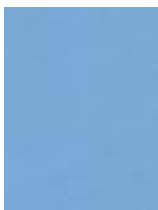
Cross Grove

999



Pewter

942



Cornflower

990



Bermuda

945



Olive

924



Adobe

932



Tucson

933



Teak

910



Grapevine

956



Lagoon

947



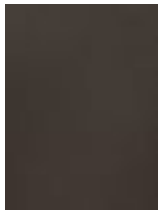
Jamaica

944



Napa

964



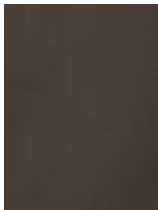
Bark

938



Merlot

926-2



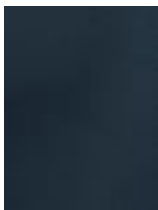
Mammoth

957



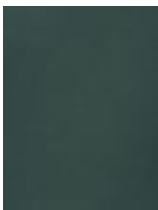
Plum

961



Navy

936



Juniper

952



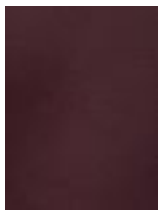
Pine

908



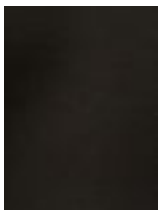
Storm

960



Wine

959



Black

951

Typical Physical Properties

TEST	UNITS	METHOD	RESULTS
Width	Inches (cm)	ASTM D-1776	54 (137)
Thickness	Inches (mm)	ASTM D-1776	0.043 (1.1)
Weight	O/yd2 (g/m2)	ASTM D-3776	15.0 (509)
Tensile Strength	psi	ASTM D-751	150 x 90
Trap Tear Strength	psi	ASTM D-5733	40 x 20
Abrasion #10 Duck Cloth	Double Rubs	Wyzenbeek ASTM D-3597	500,000 +
Crocking	AATCC Scale	ASTM D-1117	5 dry 5 wet (water) 5 wet (alcohol)
Taber Abrasion CS-10, 1000g	Cycles	GM2726M ASTM D-3884	1,000 cycles No change
Flammability		UFAC	CLASS 1
		NFPA 260-A	CLASS 1
		CA TB 117-2013 Section 1	Pass
		ASTM E-84	Class A
Colorfastness	Light	AATCC-16H	Class 5
Emissions		California 01350	Pass

CONTENT

- ◆ 55% TPE, 35% Polyester, 10% Cotton

EnviroLeather™ California Cleaning Instructions

EnviroLeather™ California has a superior, stain resistant, durable finish. It is designed for easy care and cleaning. The high-tech polymer finish also provides excellent chemical resistance.

Ordinary Stains - Remove ordinary dirt, dust, smudges, and most spills by simply wiping with a damp cloth or soap and water.

Stubborn Stains - For stubborn stains such as ink, grease, shoe polish, etc., try to remove with rubbing alcohol. (See Procedure Below)

Disinfect - Disinfect with 20 percent bleach solution.

Cleaning Code - S/W

BALL POINT PEN INK REMOVAL INSTRUCTIONS

In general, ball point pen ink stains are difficult to remove. The sooner the ink is cleaned the better the chance for success. Ink compositions vary and not all ink stains can be removed.

1. Wet a portion of a soft white cloth with a blend of 50% rubbing alcohol and 50% Wisk detergent. Another option is a mixture of rubbing alcohol and baking soda.
2. Apply the cleaning solution to the ink stain and blot up the stain. Do not rub. Blot up all of the cleaning solution and repeat step 2 several times either blotting the stain or gently rubbing in a circular motion. Do not rub vigorously.
3. Apply a small amount of the cleaning solution with a soft bristle toothbrush and gently brush in a circular motion. As the ink loosens up blot up the stain with a dry cloth. Repeat this step three times, using small amounts of cleaning solution each time.
4. Extract the cleaning solution with a damp cloth several times to remove the cleaning solution (and the blue Wisk color).
5. Allow to dry. Check for residual soap and repeat step 4 if necessary.

EnviroLeather™ Features

ENVIRONMENTAL BENEFITS

- ◆ PVC-Free, Chlorine free (no vinyl)
- ◆ Bromine-free, no halogenated flame retardants
- ◆ Plasticizer-free, no phthalates
- ◆ Recycled and renewable content
- ◆ No heavy metals
- ◆ Animal friendly

PERFORMANCE ADVANTAGES

- ◆ Outstanding abrasion resistance and durability
- ◆ Superior chemical resistance
- ◆ Designed for comfort
- ◆ Impervious to fluids
- ◆ Superior seam, puncture and tear strength
- ◆ Stain resistant, cleanable
- ◆ Excellent material recovery as it resists puddling and sagging during in-field use
- ◆ Makes tight seams and holds its shape for a tailored look

KEILHAUER

1450 Birchmount Road
Toronto, Ontario
Canada M1P 2E3
Tel: (416) 759.5665
Fax: (416) 759.5723
Toll Free (800) 724.5665
www.keilhauer.com

For samples email:
textilememos@keilhauer.com

enviroleather™
Sustainable Technology • Limitless Color • Ultimate Performance
by LDI Interiors

LDI Corporation 3560
Lafayette Road Bldg. 2,
Suite C Portsmouth, NH
03801 Toll Free (866)
332-0700 Fax (603)
436-1777
www.LDIinteriors.com