

Emerson

KEILHAUER



E1700 - Dune



E1702 - Sandbar



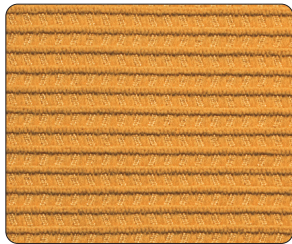
E1713 - Loam



E1701 - Driftwood



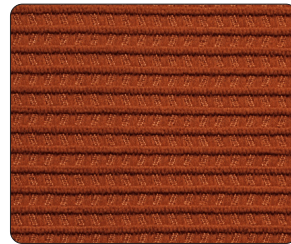
E1714 - Tar



E1704 - Yarrow



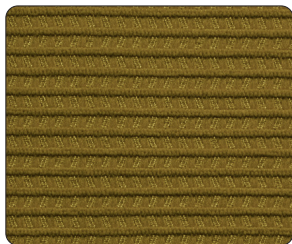
E1703 - Coriander



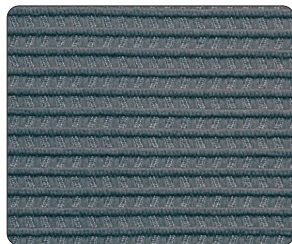
E1705 - Campfire



E1707 - Roman Orange



E1712 - Fig



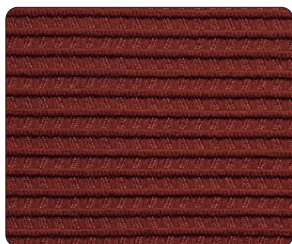
E1711 - Dusty Blue



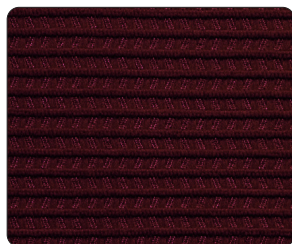
E1710 - Deep Sea



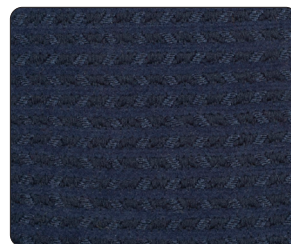
E1709 - Ink



E1706 - Rowan Berry



E1708 - Turkish Red







E1715 - Amrin

Specifications

Emerson

Content	80% Post-Consumer Recycled Polyester, 20% Virgin Polyester (Acrylic Backing)
Finish	GreenShield
Repeat	Horizontal 3/8" Vertical 7/16"
Weight/Linear Yard	17 oz
Width	54"

Performance characteristics

Abrasion Resistance (ASTM D4157)	100,000 double rubs Heavy duty	
Colorfastness to Light (AATCC- 16)	40 hrs., Class 5	
Colorfastness to Crocking (AATCC- 8)	dry - Class 4.5 wet - Class 5	
Breaking Strength (ASTM D5034-09)	Warp: 306 lbs.min. Fill: 236 lbs. min.	
Seam Slippage (ASTM D4034-92)	Warp: 94.6 lbs. min. Fill: 92.6 lbs. min.	
Brush Pill (ASTM D3511)	Class 4.5	

Flammability

CAL TB 117	Passes	
------------	--------	---

Recommended cleaning instructions

WS	Water based cleaning agents used by a professional furniture cleaning service.
----	--

Dye lots may vary slightly from samples shown.



Visit Material Bank
to Order Samples