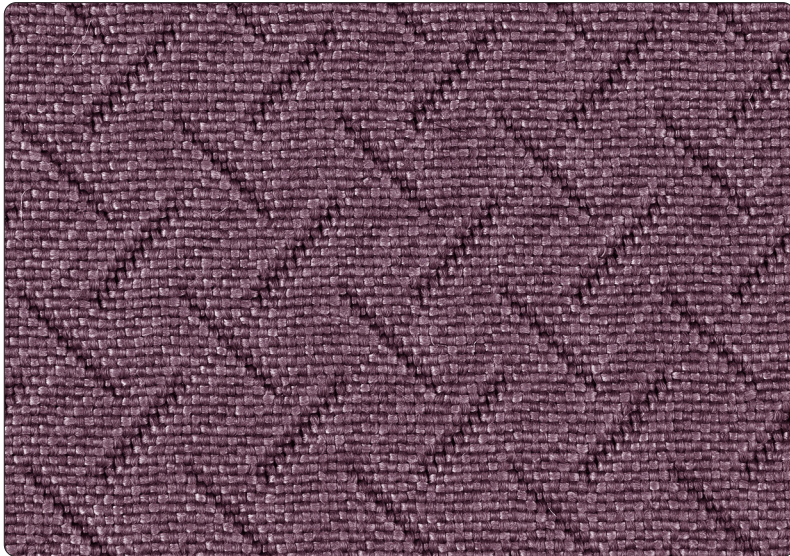
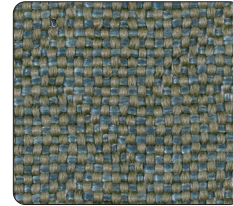


Hatch

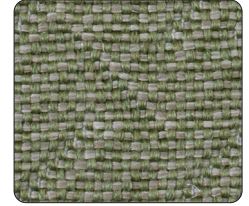
KEILHAUER



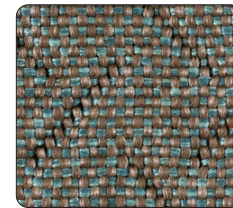
H1920 - Dark Violet



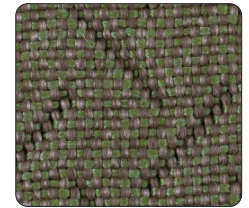
H1902 - Teal Green



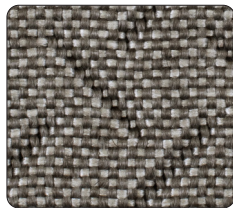
H1903 - Green Tea



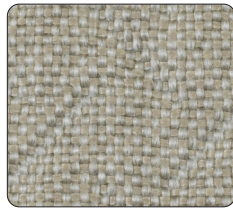
H1901 - Teal Grey



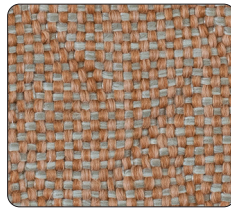
H1915 - Uniform



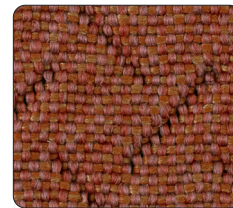
H1909 - Mink



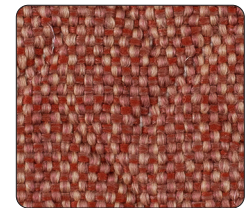
H1907 - Straw Hat



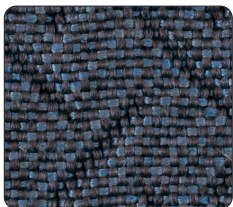
H1914 - Peach Fuzz



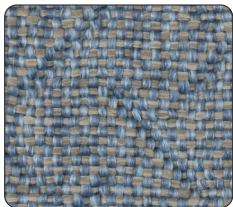
H1910 - Autumn



H1906 - Flamingo



H1911 - Postcard Blue



H1918 - Wisp Blue



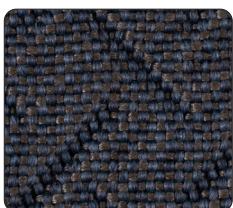
H1912 - Robin Egg



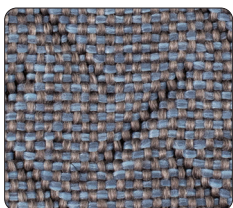
H1913 - Golden Rod



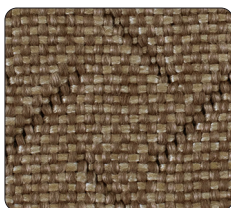
H1905 - Cantaloupe



H1916 - Blue Grey



H1917 - Stone Blue



H1904 - Artifact



H1919 - Coffee Bean








H1908 - Shadow

Specifications

Hatch

Content	76% Polypropylene, 24% Polyester
Finish	None
Repeat	0.88" V, 1.02" H
Weight/Linear Yard	21 oz
Width	55"

Performance characteristics

Abrasion Resistance (EN ISO 12947-2) Martindale Method	100,000 cycles Heavy duty	
Colorfastness to Light (AATCC- 16A)	Class 5	
Colorfastness to Crocking (AATCC- 8) dry wet	Class 4 - 5 Class 4 - 5	
Breaking Strength (ASTM D5034)	Warp: 403 lbs. min. Fill: 659 lbs. min.	
Seam Slippage (ASTM D4034)	Warp: 61 lbs. min. Fill: 82 lbs. min.	
Brush Pill (ASTM D3511)	Class 5	

Flammability

CAL TB 117 2013	Passes	
-----------------	--------	---

Recommended cleaning instructions

WS	Water based cleaning agents used by a professional furniture cleaning service (not tested for bleach).
----	--

Dye lots may vary slightly from samples shown.



Visit Material Bank
to Order Samples