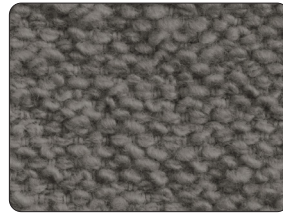


Oona

KEILHAUER



O1601 - Charcoal



O1602 - Mystic



O1600 - Black



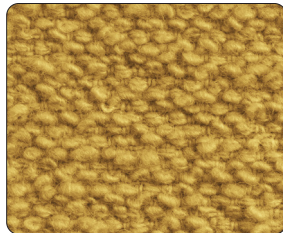
O1618 - Olive Night



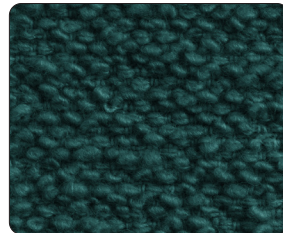
O1619 - Dark Sapphire



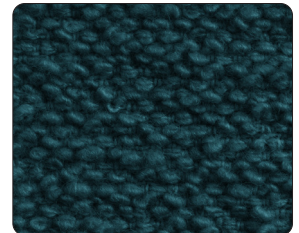
O1609 - Red



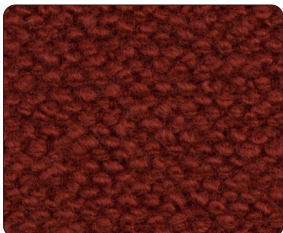
O1617 - Corn



O1615 - Jade



O1606 - Teal



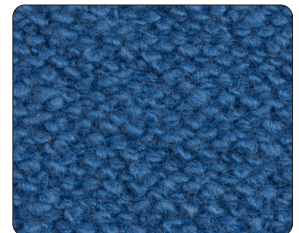
O1612 - Carnelian



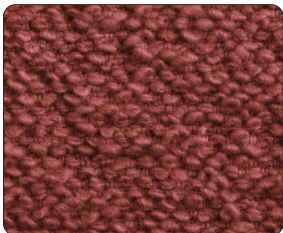
O1614 - Oatcake



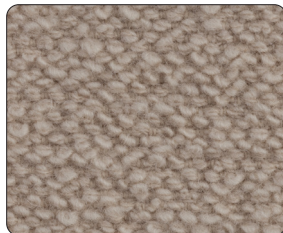
O1616 - Spring



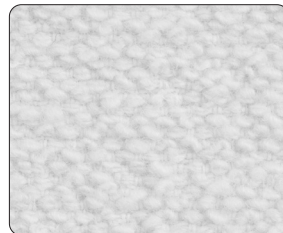
O1607 - Persian Blue



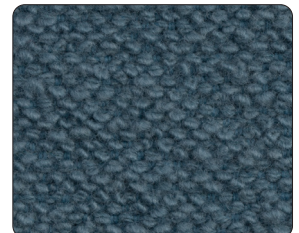
O1610 - Dusty Pink



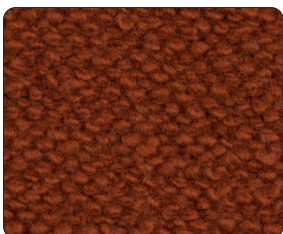
O1604 - Sand



O1605 - Neutral



O1608 - Montpellier Blue



O1613 - Cinnamon

Specifications

Oona

Content	66% Wool, 34% Nylon
Finish	None
Repeat	None
Weight/Linear Yard	23 oz
Width	54"

Performance characteristics

Abrasion Resistance (ASTM D4966-12) Martindale Method	275,000 cycles Heavy duty	
Colorfastness to Light (AATCC-16.3)	Class 4	
Colorfastness to Crocking (AATCC-8)	dry - Class 5 wet - Class 4.5	
Breaking Strength (ASTM D5034)	Warp: 194.88 lbs. min. Fill: 124.33 lbs. min.	
Seam Slippage (ASTM D4034-92)	Warp: 106 lbs. min. Fill: 52.5 lbs. min.	
Brush Pill (ASTM D4970M-16)	Class 4	

Flammability

CAL TB 117-2013	Passes	
-----------------	--------	---

Recommended cleaning instructions

WS	Water based cleaning agents used by a professional furniture cleaning service.
----	--

Dye lots may vary slightly from samples shown.



Visit Material Bank
to Order Samples