

Town

KEILHAUER



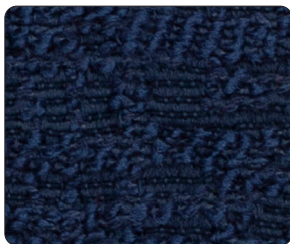
T1804 - Dark Olive



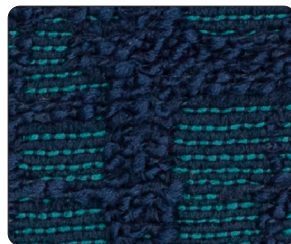
T1803 - Cappuccino



T1805 - Concrete



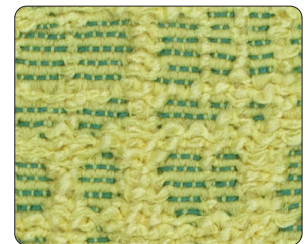
T1809 - Rain



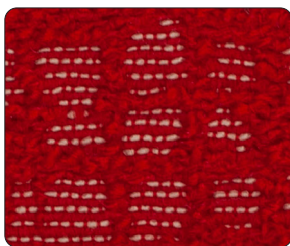
T1810 - Rain water



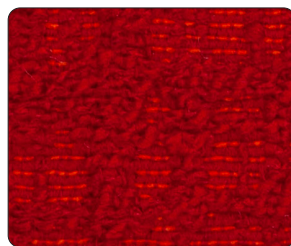
T1811 - Water



T1812 - Lemon Water



T1808 - Cherry Blossom



T1807 - Autumn Gold



T1806 - Lantern



T1801 - Night








T1802 - Asphalt

Specifications

Town

Content	90% Post-Consumer Recycled Polyester, 10% Rayon
Finish	Greenshield Stain Repellent
Repeat	21" V, 13.25" H
Weight/Linear Yard	21 oz
Width	54"

Performance characteristics

Abrasion Resistance (ASTM D4157)	85,000 Double Rubs	
Colorfastness to Light (AATCC- 16A)	40 hrs. Class 4.5	
Colorfastness to Crocking (AATCC- 8)	dry - Class 4.5 wet - Class 5	
Breaking Strength (ASTM D5034)	Warp: 287.25 lbs. min. Fill: 241.13 lbs. min.	
Seam Slippage (ASTM D4034)	Warp: exceeds 50 lbs Fill: exceeds 50 lbs	
Brush Pill (ASTM-D3511)	Class 4.5	
Flammability		
CAL TB 117 2013	Passes	

Recommended cleaning instructions

WS	Water based cleaning agents used by a professional furniture cleaning service (not tested for bleach).
----	--

Dye lots may vary slightly from samples shown.



Visit Material Bank
to Order Samples