

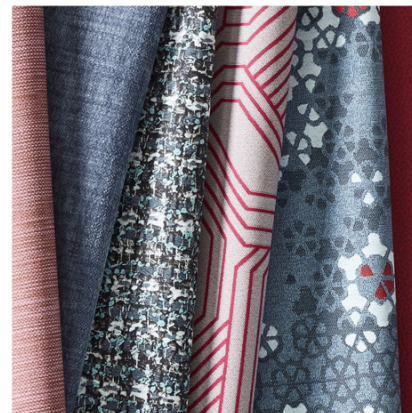
silicone hybrid upholsteries meticulously designed to mimic the appearance of a woven fabric. Each dynamic and visually textured pattern is brought to life through clarity in digital printing, giving the collection a warm, woven feel with all the benefits of a durable, sustainable and cleanable silicone.

Escapade takes advantage of advances in coated technology to work against any potential hydrolysis issues in the field; Scholar imitates the look of a high-end leather skin with unparalleled resistance to pesky ink and denim stains; and Odyssey is a plush woven chenille fabric combined with innovative PFOA-free moisture barrier technology that is resistant to oil-based stains.

Double Exposure's enduring and scrubbable fabrics are suitable for a wide variety of spaces from health care to hotels, offices to schools. As a forever PVC-free company, Carnegie's coated fabrics are always free of toxic chemicals, including but not limited to formaldehyde, antimicrobials, phthalates and plasticizers.

Here are the patterns' details:

- **Revolve Print:** This silicone hybrid fabric is a rhythmic take on a subtle, contemporary floral pattern. Durable in construction, it is antimicrobial and antibacterial and approved for hospital-grade cleaners. The fabric comes in five colorways.
- **Escapade:** Using innovative advances in coated technology, Escapade is made of a versatile thermoplastic elastomer (TPE) material, which is engineered to be impervious to potential hydrolysis issues. It features a subtle color variation that creates depth and movement across its surface, imitating the look of a rich textural weave. Free of any chemical additives, this fabric is HHI and Kaiser compliant. It's available in 12 colorways.
- **Scholar:** Designed to replicate the look of a timeless shagreen texture, Scholar's 22 nuanced colorways encapsulate everything from refined neutrals to rich jewel tones. Engineered as part of Carnegie's Clean Slate group of coated performance fabrics, it features a repel and release technology that prevents stains from penetrating the surface and is easily wipeable. The PVC-free, bleach-cleanable fabric is HHI and Kaiser compliant.
- **Soiree Print:** Simulating the soft and elevated look of wool, Soiree Print gives the appearance of a rich, textural weave, coupled with the superior cleanability and durability of a coated silicone hybrid fabric. Suitable for hospital-grade cleaners, it is inherently



antimicrobial and antibacterial and is offered in five colorways.

- **Maze Print:** Inspired by the bold geometry of contemporary architecture, Maze Print makes a statement — all while boasting superior cleanability, durability and sustainability features. Antimicrobial and antibacterial, it is approved for hospital-grade cleaners and comes in six colorways.
- **Tartan Print:** This classic plaid with an elevated color palette is a coated silicone hybrid upholstery fabric that boasts high-performance features, including approvals for hospital-grade cleaners and inherently antimicrobial and antibacterial properties. It's offered in five colorways.
- **Odyssey:** Part of Carnegie's Elements collection, Odyssey is a woven, plush chenille with a subtle slub. The bleach-cleanable fabric features an innovative Supreen, stain-resistant silicone top layer and moisture-resistant backing. It's available in 18 colorways and is HHI and Kaiser compliant.

Carnegie continues to provide breakthrough materials and solutions for building interiors. A true innovator and thought leader within the industry, the company's June 2021 launches embrace a holistic approach to wellness, contributing to sustainable, responsible and healthy environments for end users across all markets.

LEATHER

Keilhauer Introduces Aria and Valda

Keilhauer has launched two new leather collections, Aria and Valda.

Aria's wide range of neutrals makes it easy for designers to find the perfect match for any color palette. The versatile collection of 24 neutrals features a variety of multidimensional blacks, grays, whites and browns. Aria is a chrome-free, soft and pliable semi-aniline leather that provides comfort and durability, making it suitable for high-use furniture items.

Valda features 14 trend-forward, colorful options that pair well with more muted color palettes. They include rich hues such as a deep, buttery yellow and a vibrant, punchy pink, plus more standard leather colorways like browns, blacks and navies. Valda is an aniline leather with all the distinct features of the natural hide, including a grain which varies in structure. Valda leathers are durable and suitable for high-use furniture items.

Aria and Valda are produced in a clean-water leather facility that is 100% CO2 neutral and meets the benchmark in its water purification process. The production of Aria and Valda follows a best-in-class animal welfare mandate, including product-to-farm traceability and a supplier code of conduct.

