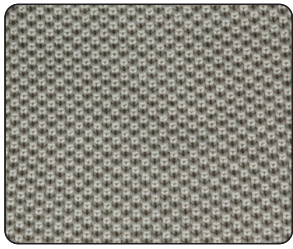
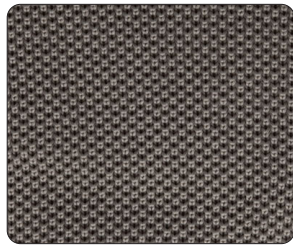


Doko D-Mesh

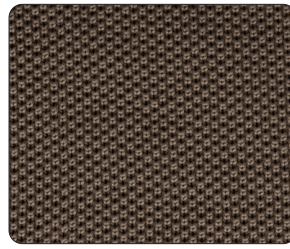
KEILHAUER



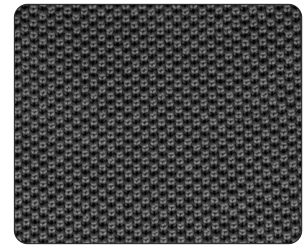
DM015 - Barley



DM016 - Khaki



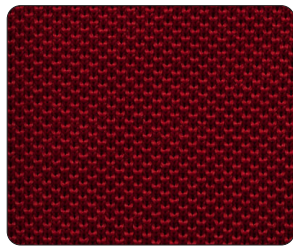
DM017 - Biscuit



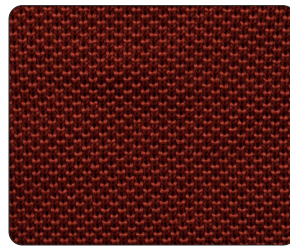
DM018 - Storm



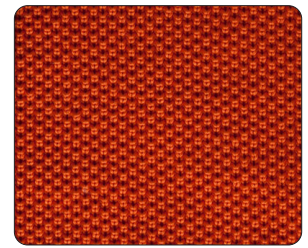
DM001 - Fuchsia



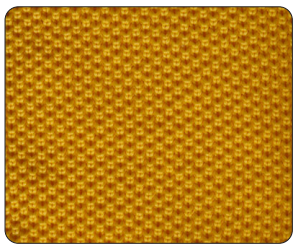
DM002 - Maraschino



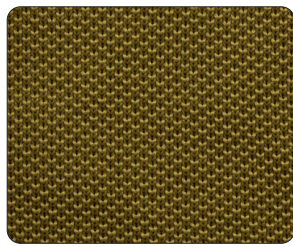
DM003 - Cayenne



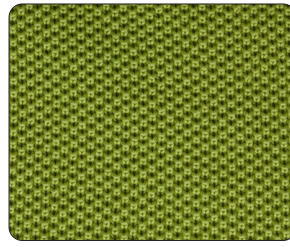
DM004 - Valencia



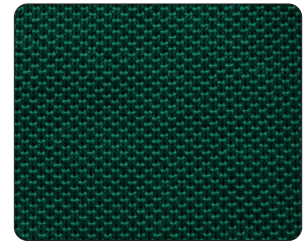
DM005 - Sunflower



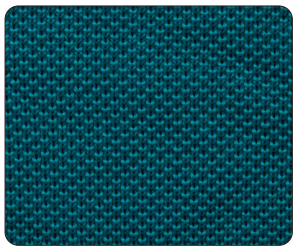
DM006 - Sprout



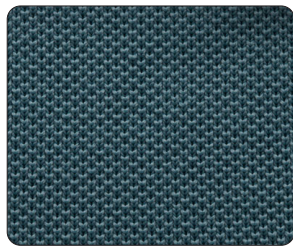
DM007 - Margarita



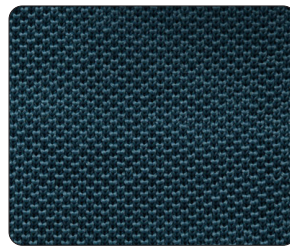
DM008 - Clover



DM009 - Aztec



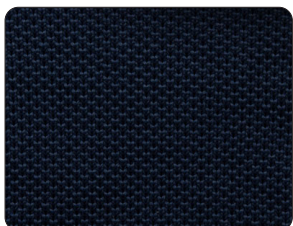
DM010 - Lagoon



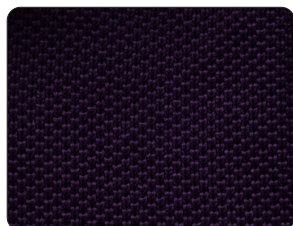
DM011 - Deep Teal



DM012 - Blue Jay



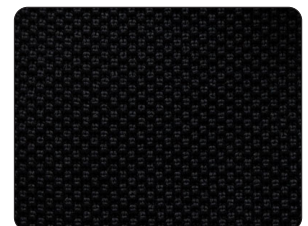
DM013 - Navy



DM014 - Plum



DM019 - Pepper



DM020 - Black

Specifications

Doko D-Mesh

Content 90% Polyester, 10% Zimmerman/Spandex

Abrasion 35,000 Double Rubs



CAL TB 117 Passes



Recommended cleaning instructions

WS Water based cleaning agents used by professional furniture cleaning service.

Dye lots may vary slightly from samples shown.

To order memos, please visit keilhauer.com/textiles

Each mesh is product specific, therefore, cannot be mixed and matched between products.