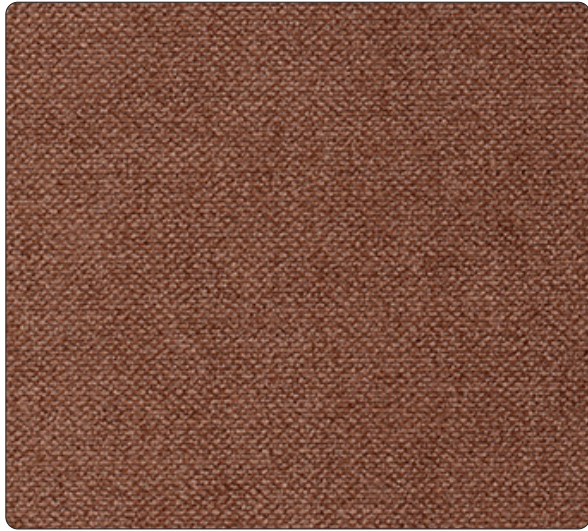


Velvety

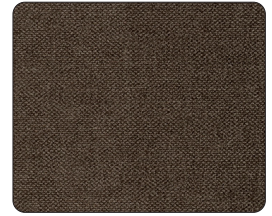
KEILHAUER



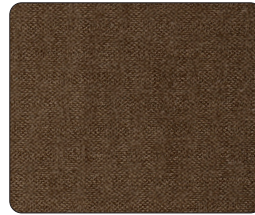
VY100 - Cava



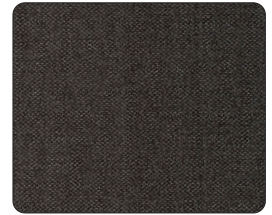
VY101 - Gaudi



VY102 - Granada



VY103 - Cortado



VY104 - Sierra Nevada



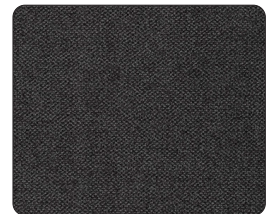
VY105 - Paella



VY106 - Siesta



VY107 - Ibiza



VY108 - Vespa



VY109 - Valencian



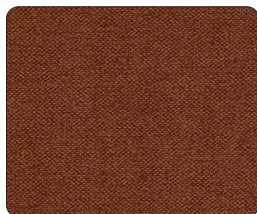
VY110 - Galicia



VY111 - Noche



VY112 - Playa



VY113 - Burnt Sienna



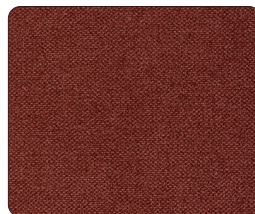
VY114 - Berenjena



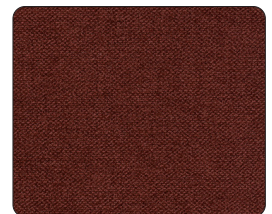
VY115 - Mauvelous



VY116 - Picasso Blue



VY117 - Sangria









VY118 - Flamenco

Specifications

Velvety

Content	80% Polyester, 11% Post-Consumer Recycled Polyester, 5% Post-Consumer Recycled Cotton, 4% Cotton
Finish	Easy Stain Release
Repeat	None
Weight/Linear Yard	27.5 oz
Width	55"

Performance Characteristics

Abrasion Resistance (ASTM D4157) Wyzenbeek Method	100,000 Double Rubs Heavy Duty	
Colorfastness to Light (AATCC-16.3)	Class 4.5	
Colorfastness to Crocking (AATCC 8-2016)	dry - Class 5 wet - Class 5	
Breaking Strength (ASTM D5034)	Warp: 239 lbs. min. Fill: 224 lbs. min.	
Seam Slippage (ASTM D4034-92)	Warp: 132.5 lbs. min. Fill: 118 lbs. min.	
Brush Pill (ASTM D3511)	Class 5	

Flammability

CAL TB 117-2013	Passes	
-----------------	--------	---

Recommended cleaning instructions

WS	Water based cleaning agents used by a professional furniture cleaning service
----	---

Dye lots may vary slightly from samples shown.



Visit Material Bank
to Order Samples