



Keilhauer Launches Two Carbon Neutral Ottomans

Keilhauer announced the launch of the industry's first certified carbon neutral ottomans: Vagabond and Dally.

"After the success of our Swurve office chair, it has become a priority for us to expand our carbon neutral product offerings," said Meghan Sherwin, Chief Marketing Officer. "We are thrilled to introduce the contract furniture community to our industry's first-ever carbon neutral ottomans – this is an exciting step in our collective goal for a sustainable future."

VAGABOND

Created by the award-winning designer Andrew Jones, Vagabond is a versatile ottoman designed to be the vagabond of the office, usable everywhere from the cubicle to the boardroom. Inspired by the weighty shape of a traveler's bundle, Vagabond's design features organic, flowing lines; its form existing somewhere between a cube and a sphere.

"With Vagabond, I wanted to design an ottoman that works more like a stool," said Jones. "It can be used around a table, for impromptu meetings, or it can



look quite whimsical and light-hearted when grouped in clusters within a communal space like a library or lobby."

Aside from its carbon neutral status, Vagabond's design highlight is its durable reinforced black leather handle, included for ease-of-movement around the workspace.

"In the design process, there was always the idea of having something that would signify that this is a mobile product," adds Jones. "The handle is familiar, it invites you to pull it – it has a soft and inviting quality to it."

Available in any Keilhauer textile, Vagabond's upholstery features a premium saddle stitch, which gives the

ottoman an added sense of quality and sophistication. With frequent movement in mind, Vagabond's bottom is configured in a black HDPE plastic, a material that is both durable and recyclable.

DALLY

Dally is a cube-shaped, classic ottoman that was designed by the in-house Keilhauer design team. Dally features black rounded nylon feet and the ottoman can be upholstered in any Keilhauer textile, from leather to wool, allowing for versatility and adaptability.

"Dally is designed to be the workhorse of the modern office," said Mike Keilhauer, President. "Ottomans are important pieces in the office furniture



ecosystem – they are flexible and mobile, and function beautifully as a casual seating solution in the workspace.”

SUSTAINABILITY

In developing Vagabond and Dally, Keilhauer took every possible step to reduce carbon emissions, from sustainably sourcing materials and responsible manufacturing, to a carefully planned end-of-life and recyclability plan, all verified by third parties. To eliminate any remaining carbon created during the manufacturing process of the ottomans, Keilhauer invested in third-party verified carbon offset projects. Both ottomans are officially certified as Carbonfree® products by ClimeCo.

In addition to their carbon neutral status, Vagabond and Dally are BIFMA Level 2® certified products, and carry an SCS Global Services certification for Indoor Air Quality at the Indoor Advantage™ Gold level.

ABOUT ANDREW JONES

Andrew Jones is a Canadian furniture designer working for international manufacturers of contract, outdoor, and residential furniture. With an MA in Furniture Design from the Royal College of Art in London and a degree in Architecture from the University of Toronto, Jones has worked for more than 20 years designing furniture and architectural interiors. This dual experience forms the foundation of his work: designing furniture fit for purpose and place.

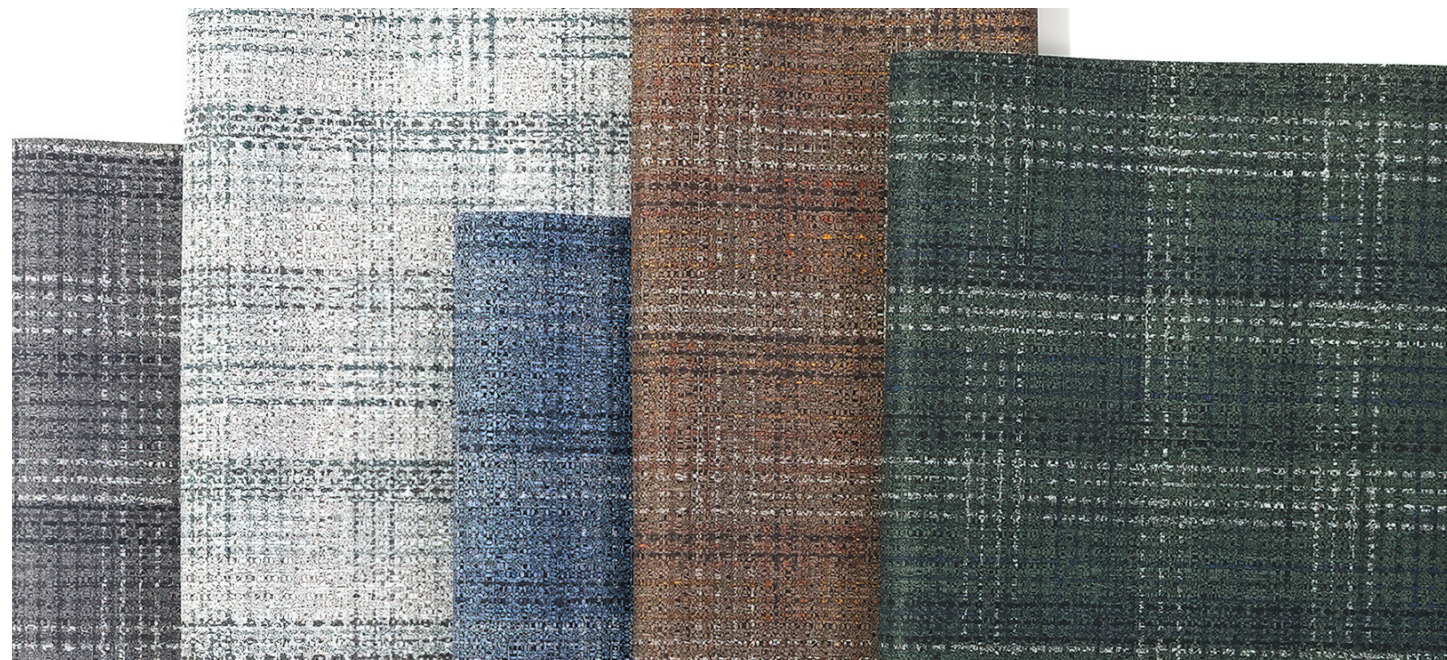
Jones’s design projects have been featured in numerous international publications, and exhibited in Canada, the United States of America, Britain, Japan, and Italy. His work is part of the permanent collections of the Royal Ontario Museum and the Design Exchange, in Toronto. **BoF**

deliver a unique fashion, or the upholstered seat and back can be monochromatic for a sophisticated vibe. The legs come in solid ash, oak, or steel in various trendsetting hues. With curvy, soft shapes and a commanding appearance, linger a little longer in the Deli lounge.

UPHOLSTERY

The Nomadic Collection from Concertex

➡ The paths we walk have been paved by our ancestral nomads. Today, our Nomadic Collection advocates for the curious spirit of modern minds. It encourages you to take that job across the country, fall in love across the world, and step outside of your comfort zone with materials that support you every step of the way. Inspired by the traditional nomadic lifestyle, the collection is deeply connected to nature and the cycle of seasons. It provides nomads with PFAS-free, high-performance fabrics that will withstand any adventure.



Composed of nine high-performance upholstery patterns, the collection is highlighted by two digitally created Silicone Hybrid upholstery patterns, Wayfarer and Highlands, and a high-performance velvet, Connection. Wayfarer is a kaleidoscope-inspired geometric woven pattern that coincides with the richness of experiences and individuals' perspectives. Highlands is a woven plaid inspired by the Scottish Highlands, encapsulating adventures and the joy of accomplishments. Embossed with a connected hexagon pattern, Connection's beautiful jewel tones color line will surely spark conversations.

Life is short. Experience, explore, and expand with the Nomadic Collection.

SEATING

Keilhauer Goes Electric

➡ Keilhauer announced the launch of Electric, their latest sofa offering. Designed by Bendtsen Design Associates, Electric meets the needs of the modern office by combining European design elements with an optional cleverly-integrated power source. Adaptable to a variety of work spaces such as lobbies, lounges and private offices, Electric balances comfort, function and beauty.

"When designing Electric, we wanted to create an innovative piece that would provide people with a place to relax and recharge," said Mike Keilhauer, president. "Modern offices require modern solutions, and Electric, with its focus on design, comfort and utility, rises to that challenge."

Available in two-seater and three-seater sofa models, Electric boasts a minimalist design profile that still manages to lend an air of sophistication and luxury to commercial spaces. The sofa's curved Italian cushions flow elegantly into one another, creating a seating environment that is warm and inviting, enveloping the user in comfort.

"The sofa's shape is quite harmonious and trend-forward," said Niels Bendtsen, designer. "The seat cushions flow right into the arm and back cushions, which creates a silhouette that is both classic and dynamic."

Electric is Keilhauer's first freestanding sofa to offer a built-in power source option. Located at the center of the sofa, discreetly installed underneath the seat, this power source features one standard outlet and two USB ports, which allows for a variety of devices to be charged. This unique power feature elevates Electric – not only is it an ultra-comfortable lounge piece, it can also be a private getaway for solo work on a laptop, or it can facilitate a quick charge of a device while waiting for a meeting to begin.

