

Nova

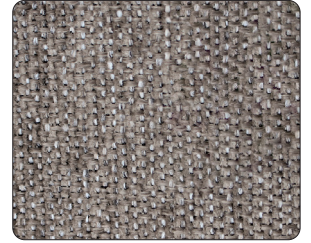
KEILHAUER



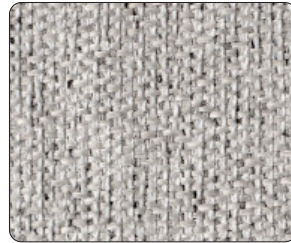
NV104 - Neptune



NV100 - Milkyway



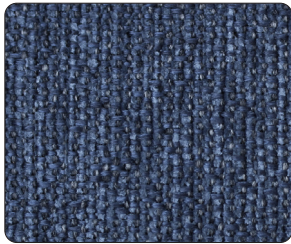
NV103 - Moon



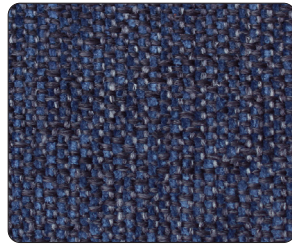
NV101 - Meteoroid



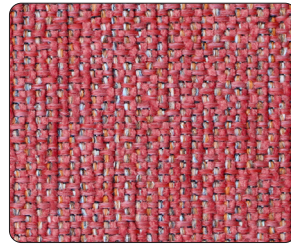
NV102 - Comet



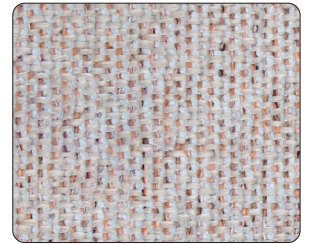
NV105 - Blue Moon



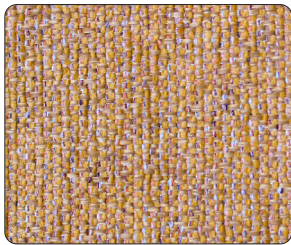
NV106 - Galaxy Blue



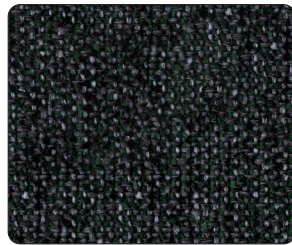
NV108 - Infrared



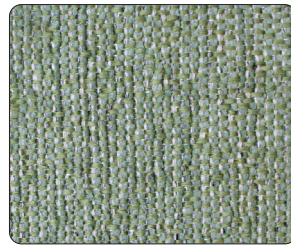
NV107 - Meteor Shower



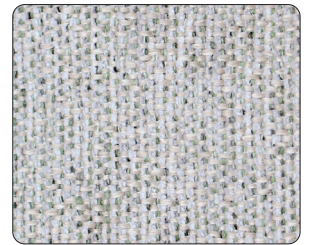
NV109 - Asteroid



NV112 - Nebulae



NV111 - Martian



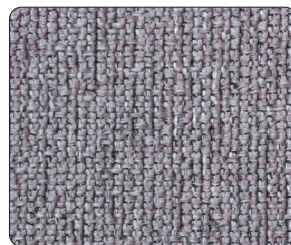
NV110 - Comet Tail



NV116 - Eclipse



NV115 - Dark Matter



NV114 - Stardust



NV113 - Lunar

Specifications

Nova

Content	43% Polyester, 25% Recycled Polyester, 24% Polypropylene, 6% Olefin, 2% Recycled Cotton
Finish	Easy Stain and Soil Release
Repeat	None
Weight/Linear Yard	21.8 oz
Width	55"

Performance characteristics

Abrasion Resistance (EN ISO 12947-2) Martindale Method	70,000 Cycles	A
Colorfastness to Light (AATCC- 16)	Class 5	☀️
Colorfastness to Crocking (AATCC- 8)	dry - Class 5 wet - Class 5	☕
Breaking Strength (ASTM D5034)	Warp: 355 lbs. min. Fill: 237 lbs. min.	✳️
Seam Slippage (ASTM D4034)	Warp: 131 lbs. min. Fill: 141.5 lbs. min.	✳️
Brush Pill (ASTM D3511)	Class 5	✳️

Flammability

CAL TB 117 2013	Passes	🔥
-----------------	--------	---

Recommended cleaning instructions

WS	Water based cleaning agents used by a professional furniture cleaning service
----	---

Dye lots may vary slightly from samples shown.



Visit Material Bank
to Order Samples