

# KEILHAUER

envirowoven™

Toile Collection



Silver 7010



Silversea 7015



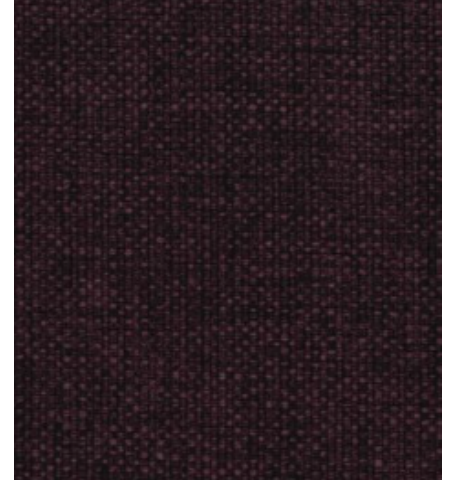
Cider 7018



Ore 7011



Brook 7013



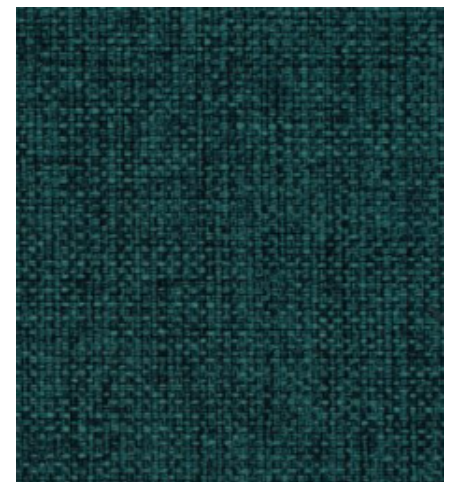
Currant 7017



Raven 7012



Starling 7014



Lagoon Breeze 7016

## Typical Physical Properties

TEST	UNITS	METHOD	RESULTS
Width	Inches (cm)	ASTM D-1776	54 (137)
Weight	O/yd2 (g/m2)	ASTM D-3776	10 oz/yd2
Seam slippage	psi	ASTM D-4034	66 lbs warp
			54 lbs weft
Tear Strength	Tongue tear	ASTM D-2261-13	69 warp/93 fill
Abrasion #10 Duck Cloth	Double Rubs	Wyzenbeek ASTM D-3597	100,000 +*
Crocking	AATCC Scale	AATCC 8	5 dry 5 wet (water)
Colorfastness	Light	AATCC-16.3-2014	Grade 4.5
Flammability		UFAC	Pass
		NFPA 260-A	Pass
		CA TB 117-2013 Section 1	Pass



\* ACT Registered certification marks

Abrasion test results exceeding ACT Performance guidelines are not an indicator of product lifespan

### CONTENT

- ◆ 94% Polyester, 4% Polyurethane, 2% Silicone

## envirowoven™ Toile Cleaning Instructions

envirowoven™ Toile has a superior, stain resistant, durable finish. It is designed for easy care and cleaning. The high-tech polymer finish also provides excellent chemical resistance.

**Ordinary Stains** - SW, Spot clean with upholstery shampoo, foam from a mild detergent, or a mild dry cleaning solvent. Do not saturate with liquid. Pile fabrics may require brushing to restore appearance. Cushion cover should not be removed and dry cleaned.

Bleach Cleanable, Lightly spray with a 10% dilution of Household Bleach and water. After the appropriate contact time, blot surface dry and wipe or rinse with fresh water and blot dry.

## envirowoven™ Features

### ENVIRONMENTAL BENEFITS

- ◆ This product does not pose any exposure risks associated with the chemicals in Prop 65
- ◆ No added flame retardant chemicals.
- ◆ PFAS Free / PFOA/PFC Free
- ◆ Recycled and renewable content
- ◆ No heavy metals
- ◆ Healthier Hospitals compliant
- ◆ HPD available

### PERFORMANCE ADVANTAGES

- ◆ Outstanding abrasion resistance and durability
- ◆ Superior chemical resistance
- ◆ Designed for comfort
- ◆ Impervious to fluids
- ◆ Superior seam and tear strength
- ◆ Stain resistant, cleanable

### FLAMMABILITY

- ◆ Envirowoven has successfully demonstrated to comply with TB117 on furniture systems when tested with suitable components.



Visit Material Bank  
to Order Samples

# KEILHAUER

1450 Birchmount Road  
Toronto, Ontario  
Canada M1P 2E3  
Tel: (416) 759.5665  
Fax: (416) 759.5723  
Toll Free (800) 724.5665  
[www.keilhauer.com](http://www.keilhauer.com)  
[info@keilhauer.com](mailto:info@keilhauer.com)

**envirowoven™**  
Sustainable Technology • Limitless Color • Ultimate Performance  
by LDI Interiors

**LDI Solutions**  
145 Airport drive  
Rochester NH 03867  
Toll Free (866) 332-0700  
Fax (603) 436-1777  
[www.lidiinteriors.com](http://www.lidiinteriors.com)