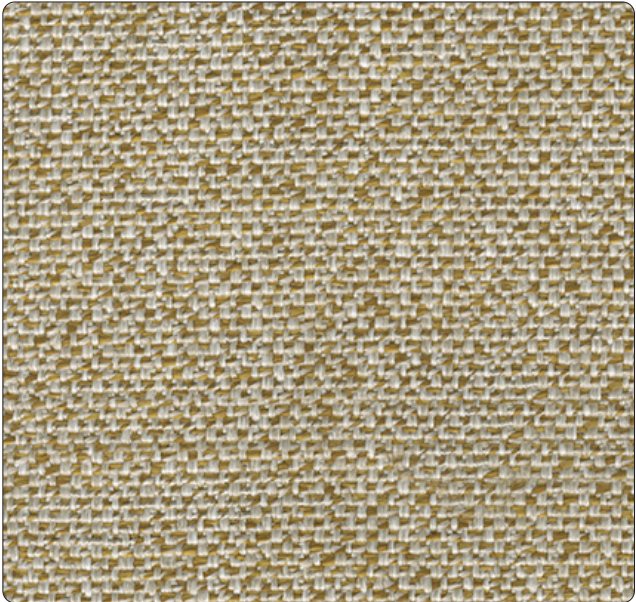
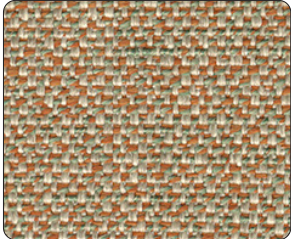


Coast

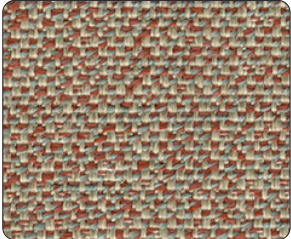
KEILHAUER



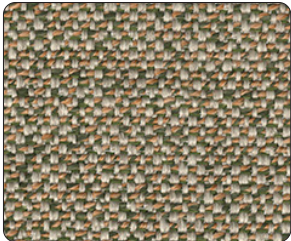
CO20 - Sand



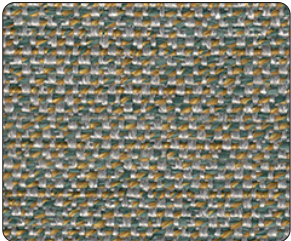
CO26 - Coral



CO62 - Reef



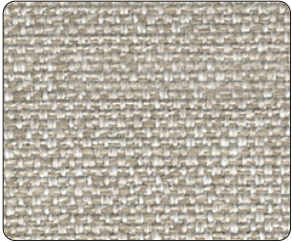
CO38 - Seafoam



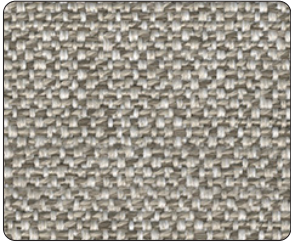
CO33 - Seagrass



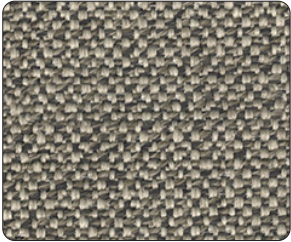
CO51 - Buoy



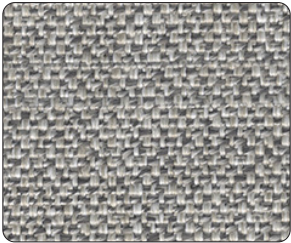
CO05 - Sand Dollar



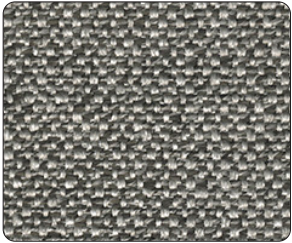
CO07 - Pier



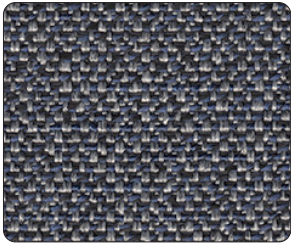
CO10 - Shoreline



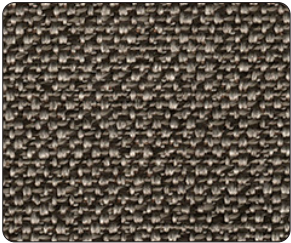
CO54 - Barnacle



CO50 - Riptide



CO47 - Tidal



CO52 - Deep Sea

Specifications

Coast

Content	80% Polypropylene, 14% Recycled Polyester, 3% Recycled Cotton, 3% Recycled Olefin
Finish	None
Repeat	None
Weight/Linear Yard	24.8 oz
Width	55"

Performance characteristics

Abrasion Resistance (ASTM D4157-13) Wyzenbeek Method	75,000 Double Rubs Heavy Duty	A
Colorfastness to Light (AATCC- 16)	Class 4.5	☀️
Colorfastness to Crocking (AATCC- 8)	dry - Class 5 wet - Class 5	👉
Breaking Strength (ASTM D5034)	Warp: 451 lbs. min. Fill: 321 lbs. min.	✳️
Seam Slippage (ASTM D4034)	Warp: 111 lbs. min. Fill: 87.5 lbs. min.	✳️
Brush Pill (ASTM D3511)	Class 5	✳️

Flammability

CAL TB 117 2013	Passes	🔥
-----------------	--------	---

Recommended cleaning instructions

WS	Water based cleaning agents used by a professional furniture cleaning service
----	--

Dye lots may vary slightly from samples shown.



Visit Material Bank
to Order Samples