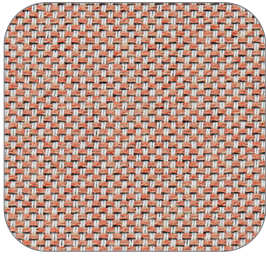
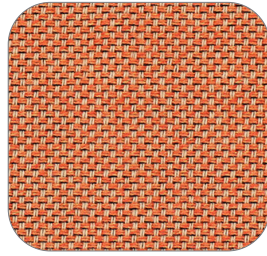


# Loop

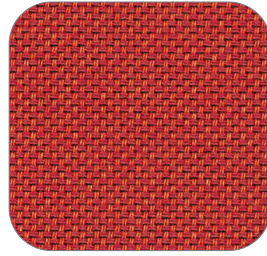
## KEILHAUER



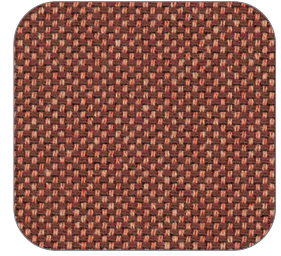
LP2002 - Coral



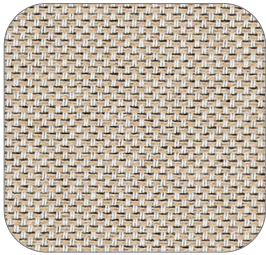
LP2301 - Apricot



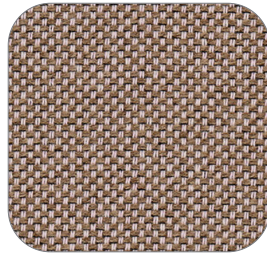
LP2501 - Fire Red



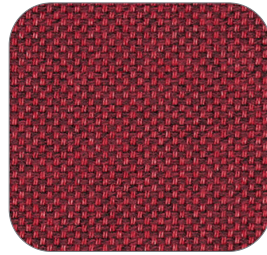
LP2401 - Redwood



LP2001 - Bone



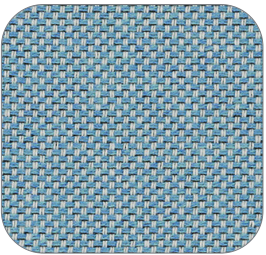
LP2701 - Lavender



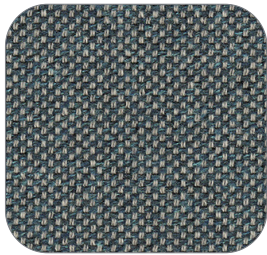
LP2601 - Pinot Red



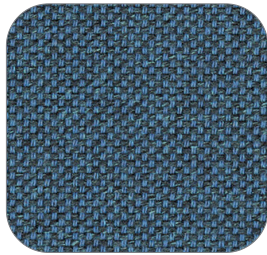
LP1601 - Burgundy Blue



LP1702 - Sky Blue



LP1302 - Livid Blue



LP2801 - Ocean Blue



LP2901 - Navy Steel



LP3101 - Dirty Ochre



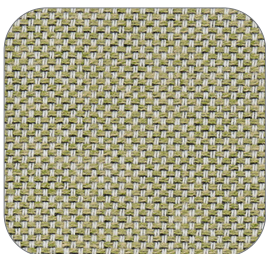
LP1501 - Dirty Gold



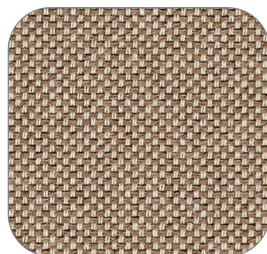
LP1401 - Green Olive



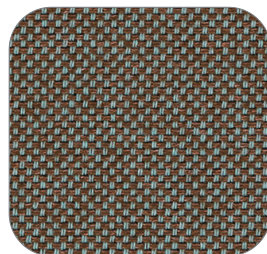
LP3001 - Eucalyptus



LP1202 - Lichen



LP2101 - Titanium



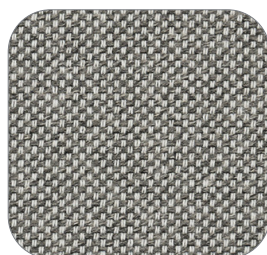
LP2201 - Wet Sand



LP1301 - Umber



LP1701 - Light Gray



LP1201 - Slate Gray



LP1801 - Warm Gray









LP1901 - Anthracite

# Specifications

## Loop

Content	100% Post-Consumer/Post-Industrial Recycled Polyester
Finish	None
Repeat	None
Weight/Linear Yard	15.48 oz
Width	55"

## Performance characteristics

Abrasion Resistance (ASTM D4157) Wyzenbeek Method	100,000 Double Rubs Heavy Duty	
Colorfastness to Light (AATCC-16)	Class 5	
Colorfastness to Crocking (AATCC-8) dry wet	Class 5 Class 4-5	
Breaking Strength (ASTM D5034)	Warp: 268 lbs.min. Fill: 240 lbs. min.	
Seam Slippage (ASTM D4034-92)	Warp: 101 lbs. min. Fill: 90.5 lbs. min.	
Brush Pill (ASTM D3511)	Class 4.5	

## Flammability

CAL TB 117	Passes	
------------	--------	---

## Recommended cleaning instructions

P(W)	Wash or dry clean
------	-------------------

*Dye lots may vary slightly from samples shown.*



Visit Material Bank  
to Order Samples